



PROTRIX[®]

CHEMTRIX
Scalable Flow Chemistry

**Process Development
& Pilot Production**



PROTRIX

PROTRIX[®]

Process Development & Pilot Production

Protrix[®] is a ceramic (Silicon carbide) continuous flow reactor for process development & small-scale production. Integrated heat exchangers & a metal-free flow path give optimal control for challenging flow chemistry applications. The compact, modular construction of Protrix[®] enables;

- o Flexible configuration to suit the needs of the user
- o Performance of different reaction types
- o Unrivalled chemical compatibility & thermal control
- o Use in a laboratory or pilot plant environment

CERAMIC (SiC) REACTORS

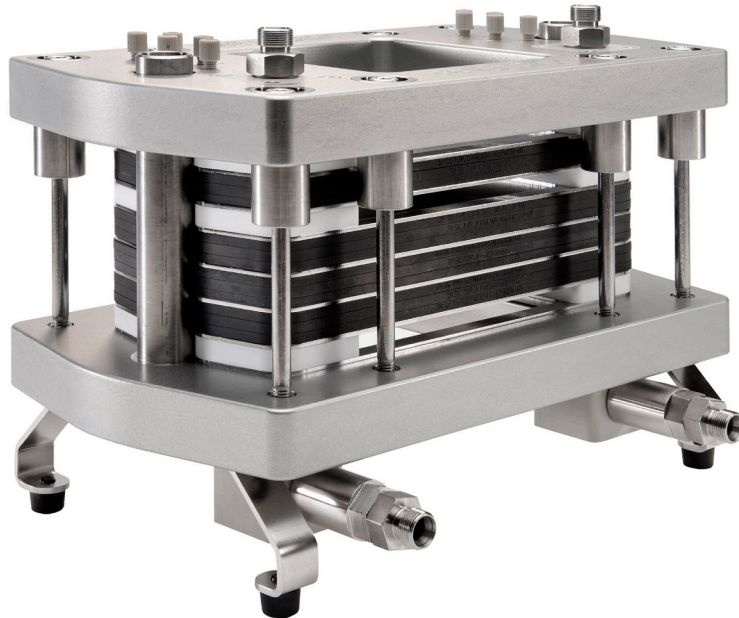
- o Diffusion bonded 3M[™] SiC reactors (braze & metal-free)
- o Superior chemical compatibility
- o Excellent heat & mass transfer
- o FDA certified materials of construction
- o German Quality

SPECIFICATIONS

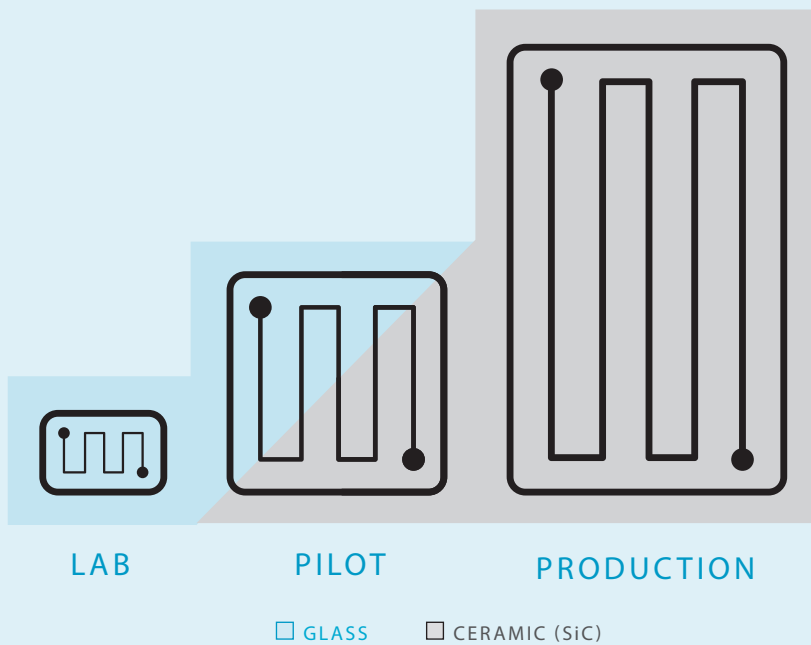
- o Reaction Types: $A + B \rightarrow P$ to $A + B \rightarrow P_1 + C \rightarrow P$
- o Throughput: 0.2 to 20 ml/min (up to 1.2 kg/h)
- o Flexible reaction volume: 1 to 13.5 ml
- o High operating pressure: up to 25 bar
- o Inert materials: PTFE, FFKM, SiC

DIMENSIONS

- o 350 (W) x 200 (D) x 250 mm (H)



CHEMTRIX BV DEVELOPS & PRODUCES
CONTINUOUS FLOW REACTORS & SYSTEMS
FROM LAB TO PRODUCTION





CHEMTRIX BV IS HEADQUARTERED IN THE NETHERLANDS

WITH OUR GLOBAL OFFICES & LABORATORIES
WE ASSIST OUR CUSTOMERS WITH LOCAL CHEMICAL
& TECHNICAL SUPPORT

CHEMTRIX
Scalable Flow Chemistry

Chemtrix BV
Galvaniweg 8a
6101 XH Echt
The Netherlands

T +31 46 70 22 600
info@chemtrix.com
www.chemtrix.com

strategic partner of
3M Science.
Applied to Life.™

Details of our global offices and labs can be found at www.chemtrix.com/contact

The data in this brochure was valid at the time of publishing, and is subject to change without notice. Chemtrix BV reserves the right to modify its product at any time without further obligation.