



**PLANTRIX**<sup>®</sup>  
MR555

**CHEMTRIX**  
Scalable Flow Chemistry

**Industrial Flow Production**



CHEMTRIX BV IS HEADQUARTERED IN THE NETHERLANDS

WITH OUR GLOBAL OFFICES & LABORATORIES  
WE ASSIST OUR CUSTOMERS WITH LOCAL CHEMICAL  
& TECHNICAL SUPPORT

**CHEMTRIX**  
Scalable Flow Chemistry

Chemtrix BV  
Galvaniweg 8a  
6101 XH Echt  
The Netherlands

T +31 46 70 22 600  
info@chemtrix.com  
www.chemtrix.com

strategic partner of  
**3M** Science.  
Applied to Life.™

Details of our global offices and labs can be found at [www.chemtrix.com/contact](http://www.chemtrix.com/contact)

The data in this brochure was valid at the time of publishing, and is subject to change without notice. Chemtrix BV reserves the right to modify its product at any time without further obligation.





**PLANTRIX<sup>®</sup>**  
MR555

## Industrial Flow Production

Plantrix<sup>®</sup> MR555 is a ceramic (Silicon carbide) continuous flow reactor used for material production at the multi-tonne scale. With integrated heat exchangers & SiC material of construction, Plantrix<sup>®</sup> gives optimal control of challenging flow chemistry applications. The compact, modular construction of Plantrix<sup>®</sup> enables;

- Long term flexibility towards different process types
- Access to a range of production volumes (5 to 400 l/h)
- Intensified chemical production where space is limited
- Unrivalled chemical compatibility & thermal control

## CERAMIC (SiC) REACTORS

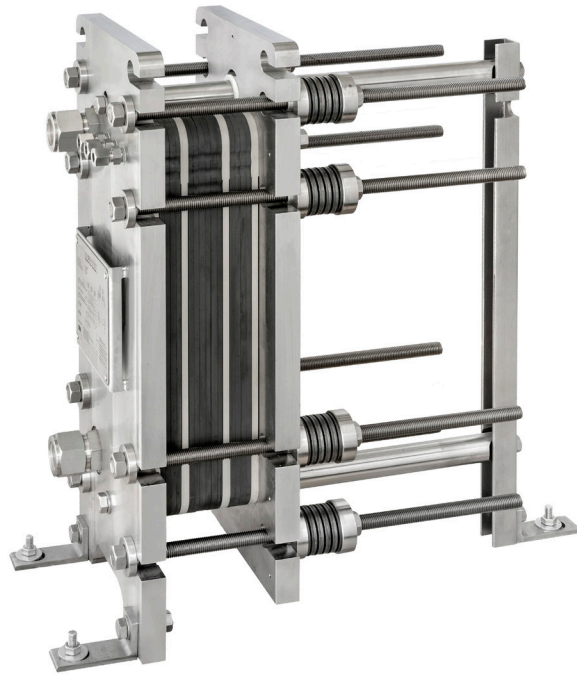
- Diffusion bonded 3M<sup>™</sup> SiC reactors (braze & metal-free)
- Excellent heat & mass transfer
- Superior chemical compatibility
- FDA certified materials of construction
- TÜV certified
- German quality

## SPECIFICATIONS

- Reaction types: up to  $A + B \rightarrow P1 + C \rightarrow P2 + D \rightarrow P$
- Throughput: 5 to 400 l/h
- Flexible reaction volume: 100 ml to 4 litre
- High operating pressure: up to 25 bar
- Wide temperature range: -30 to 200°C

## DIMENSIONS

- 346 (W) x 823 (D) x 1421 mm (H)



CHEMTRIX BV DEVELOPS & PRODUCES  
CONTINUOUS FLOW REACTORS & SYSTEMS  
FROM LAB TO PRODUCTION

